

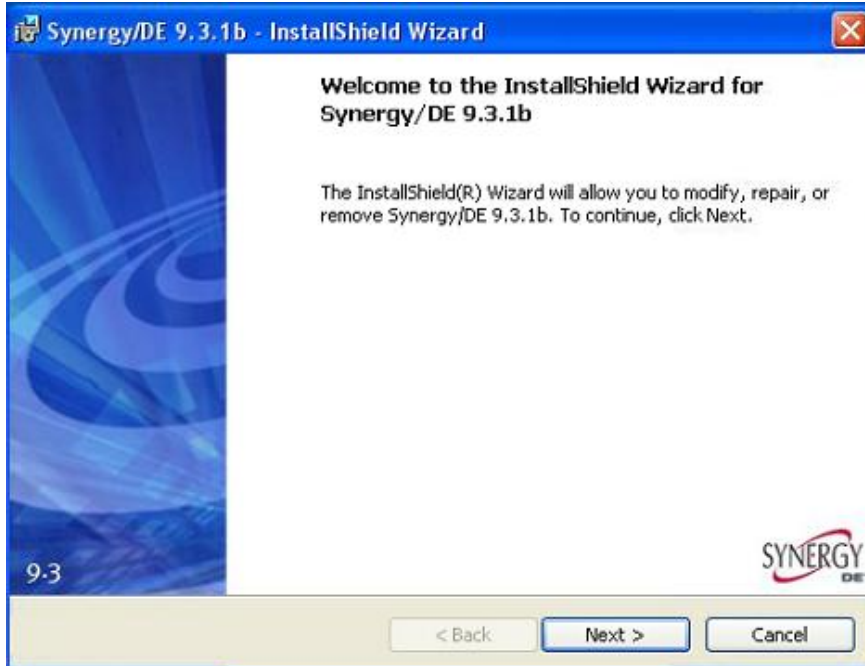
Installing Synergy on 32 Bit Servers and all Workstations

This document includes the installation notes for Synergy, as used with RCC software.

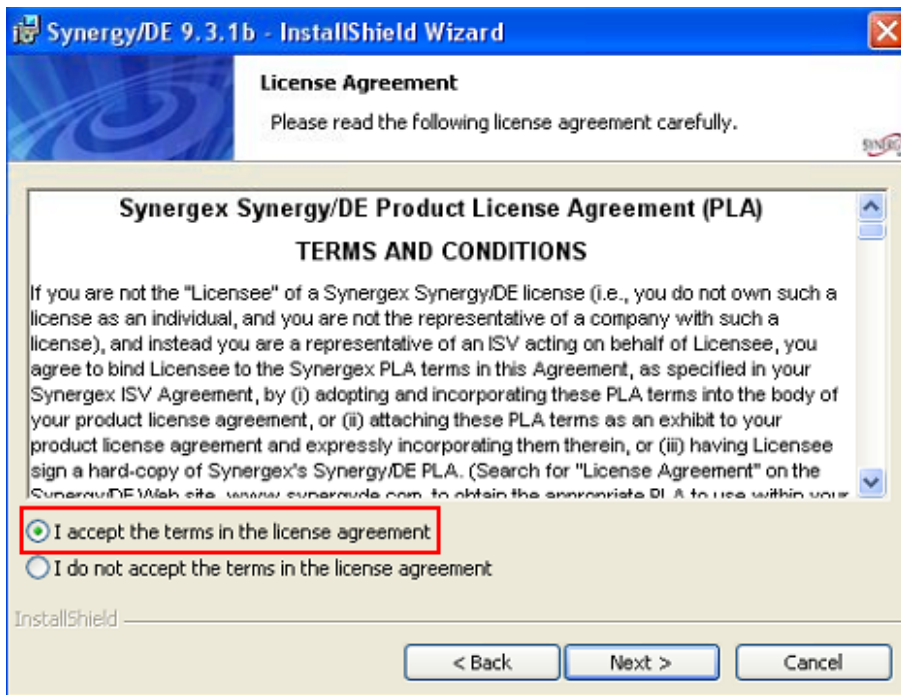
Note: The version number and screen images may vary slightly.

If you are reading this document, you are ready to install Synergy on your 32 Bit server and workstation

It may take a few minutes for this screen appear



1. Click Next.



2. Read the agreement, and if you accept the terms outlined, click next.

The screen displayed below will appear:

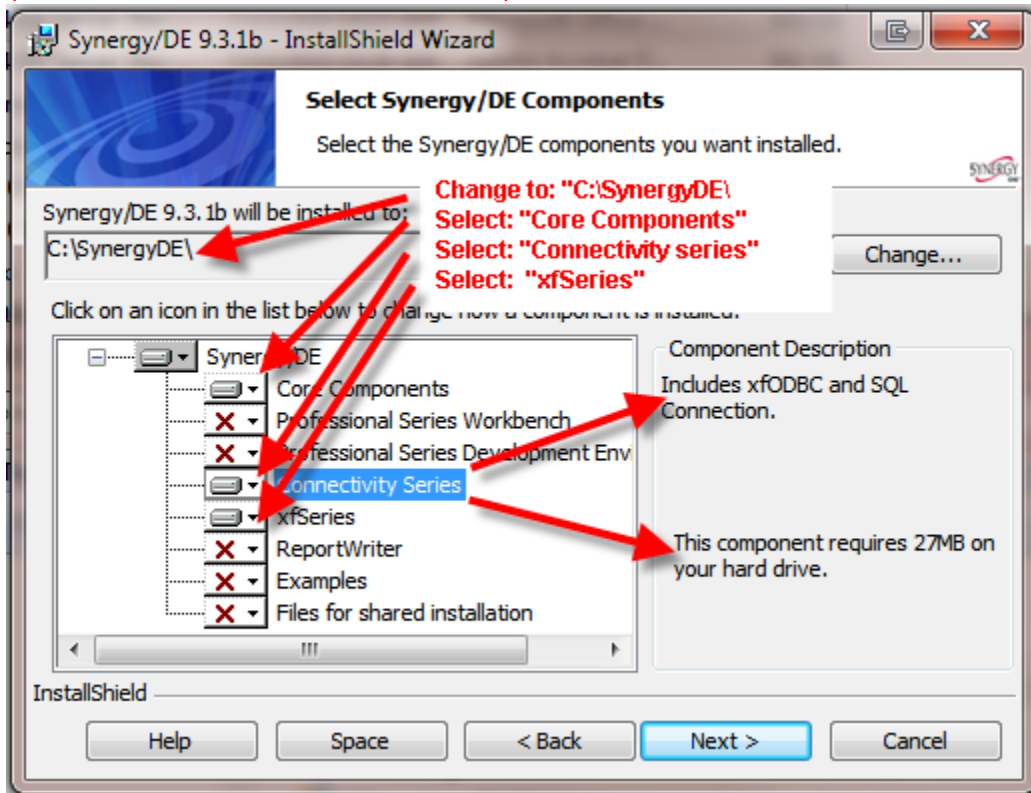
The installation location **NEEDS** to be "C:\SynergyDE".

3. If this is not the location, click the **Change** button and type the correct installation location ("C:\SynergyDE").

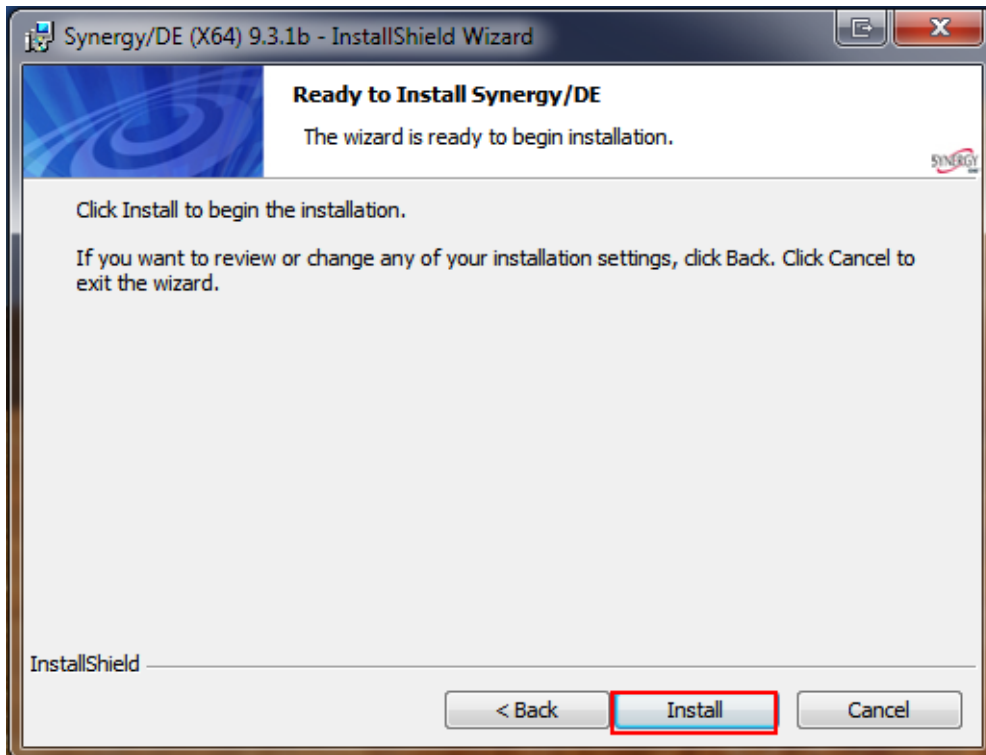
Components that need to be installed:

- Core Components
- Connectivity Series
- xfSeries

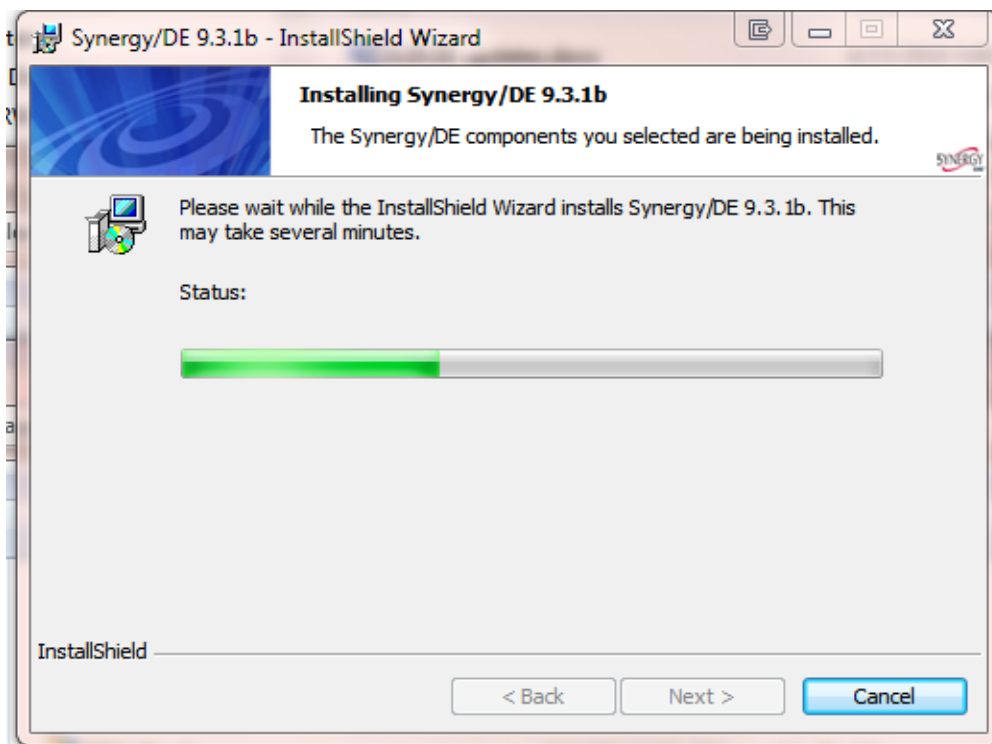
(32 Bit Servers and All MIPS Workstations)



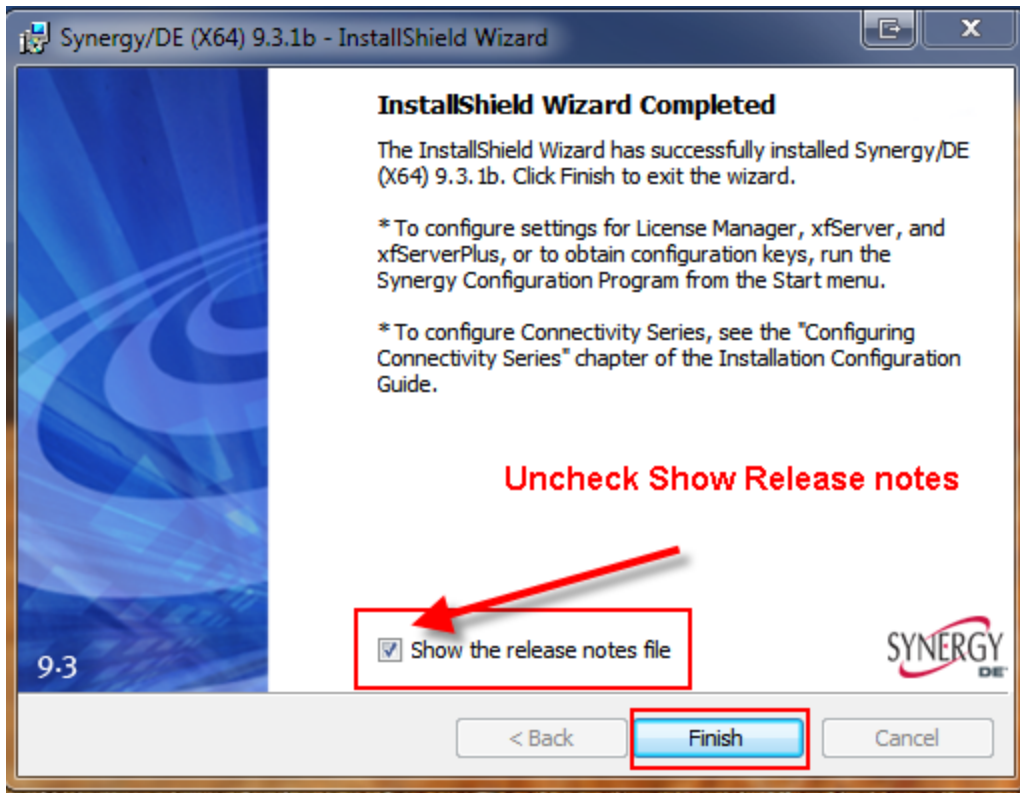
4. When your settings are confirmed, click next.



5. Click Install (You will see a progress screen that will take several minutes to complete).



6. While this process continues to run, you may receive a dialog screen, "The following services are running and may be stopped: Synergy License Manager". Click 'Ok' on this message.



7. Uncheck the 'Show the release notes file', and then click 'Finish'.

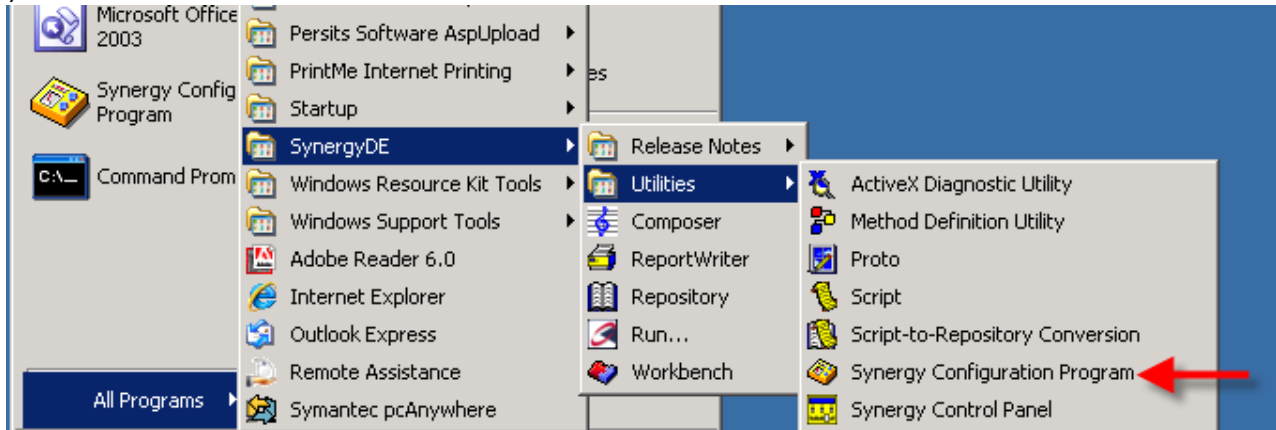
If you received new Synergy License Keys proceed to the next screen.

If you did not receive new Keys - your Synergy install is complete.

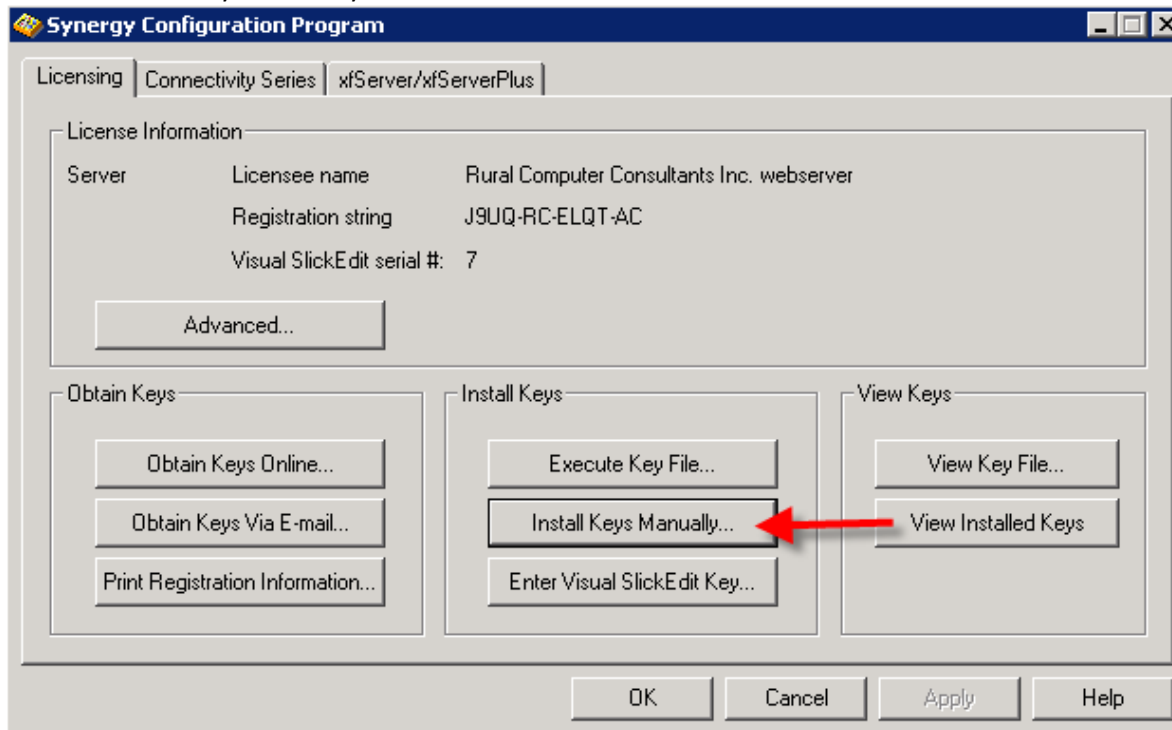
Installing License Keys for Synergy

(Server Only)

Open the Synergy Configuration Program (Go to Start>All Programs>SynergyDE>Utilities>Synergy Configuration Program).



Click on the "Install Keys Manually..." button.



In the "Product code:" field, pull down the menu, and select the option that was sent you. (Example: RUN9). The producer code will always be 999. Next, enter the Configuration key that was sent to you.

Repeat the above step for all keys supplied.

You are now done with your Synergy install.