

INSTALLING RCC FDS

This document will help guide you through an install of RCC's FDS along with its corresponding FDS update/patch process. **Microsoft updates and SynergyDE must be installed before proceeding.**

If you have any questions during your installation, please contact RCC Support at 320-365-4027.

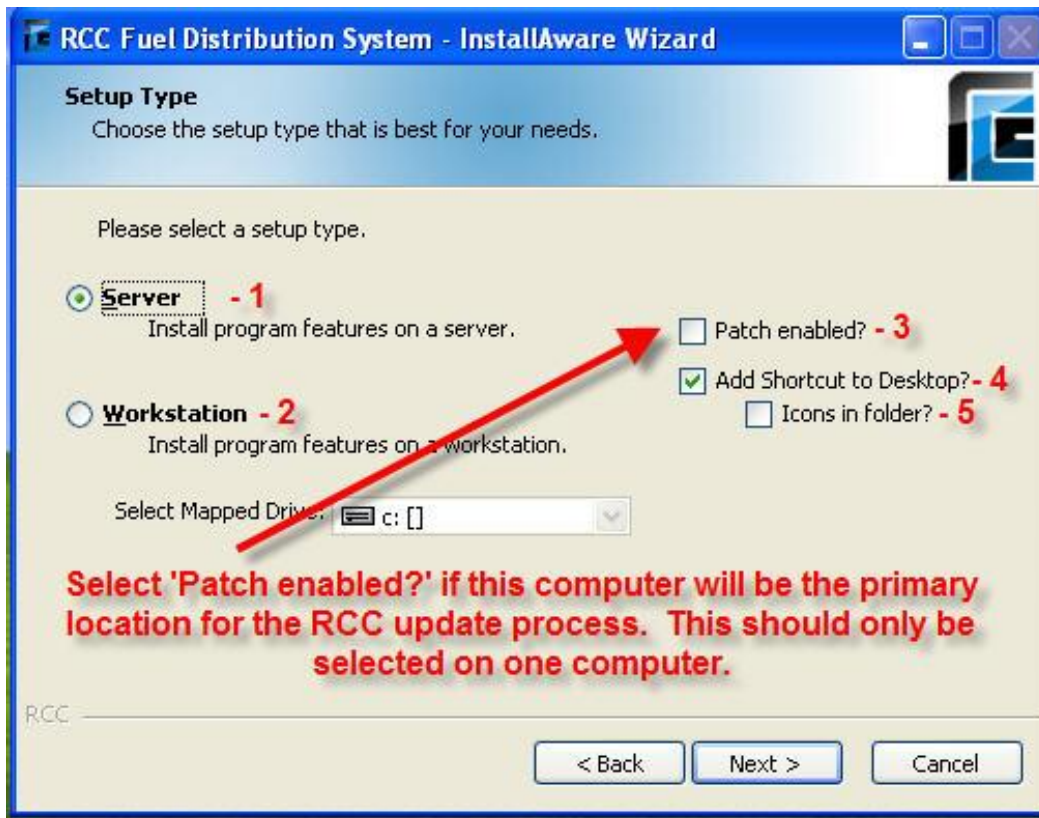
To install RCC, insert the RCC CD and click the 'Install RCC FDS' button.



Click 'Next' to continue.

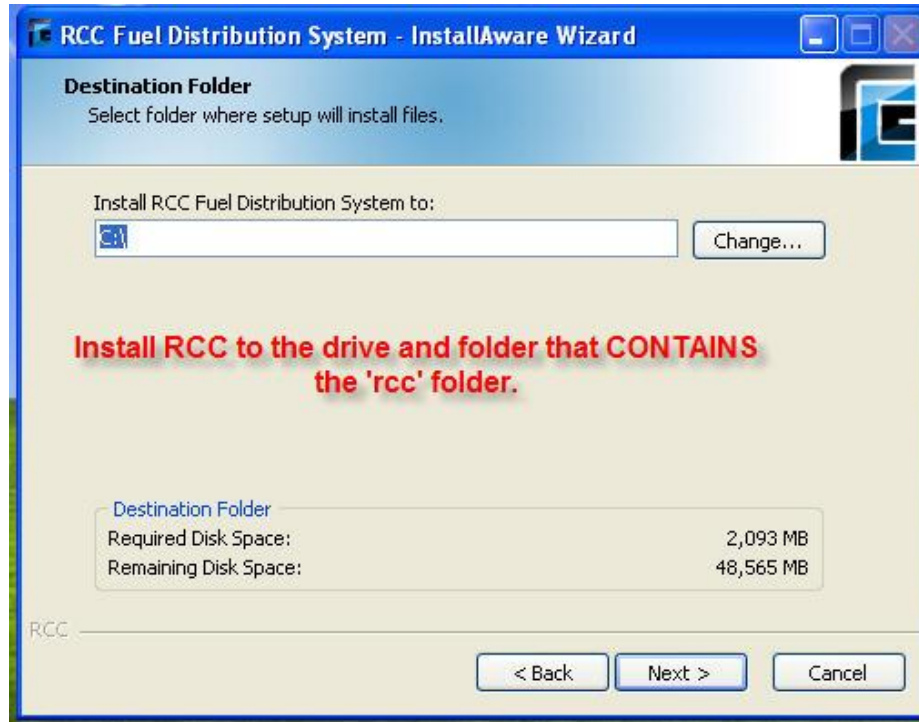


Read and check the checkbox if you accept the agreement; then click 'Next'.



1. Server: Choose this option if you are installing on the Server or Central computer.
2. Workstation: Choose this option if you are installing on a workstation.
3. Patch Enabled: Choose this option to pull FDS updates automatically and/or manually from RCC (through the Internet). This should only be installed on ONE computer in your office, preferably the server/main computer. If the server is not accessible on a regular basis, you may want to install this on a workstation that is openly available – as this computer will pull updates regularly.
4. Create Shortcuts on Desktop: Check this if you want RCC Icons created on your desktop. If you have icons on your desktop and you do not want them changed, deselect “Create Shortcuts on Desktop” checkbox.
5. Icons in folder: Selecting this option puts all the icons in a folder on your desktop. This is generally useful for companies that have multiple sets of RCC data and do not want icons spread all over the desktop. Nonetheless, any company can select this option.

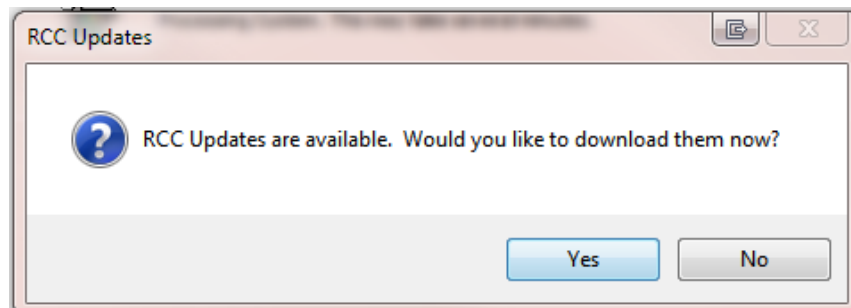
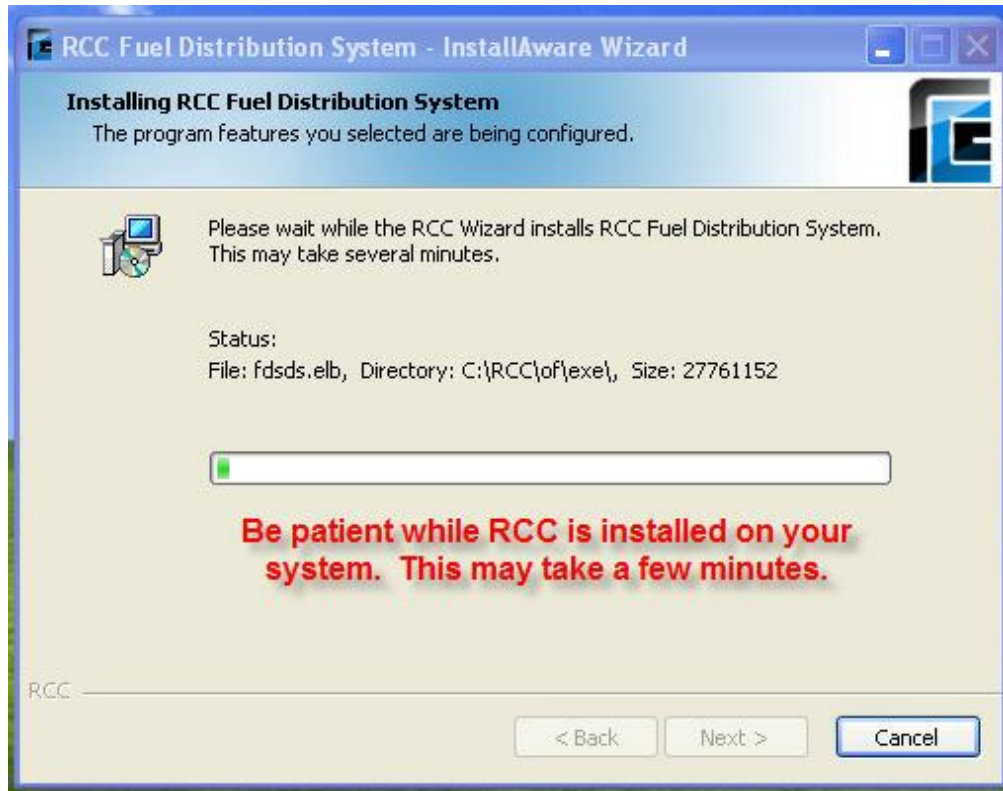
Click ‘Next’ once you have made your selections.



Choose the Drive and folder that contains the RCC Folder.
Click 'Next' to proceed.

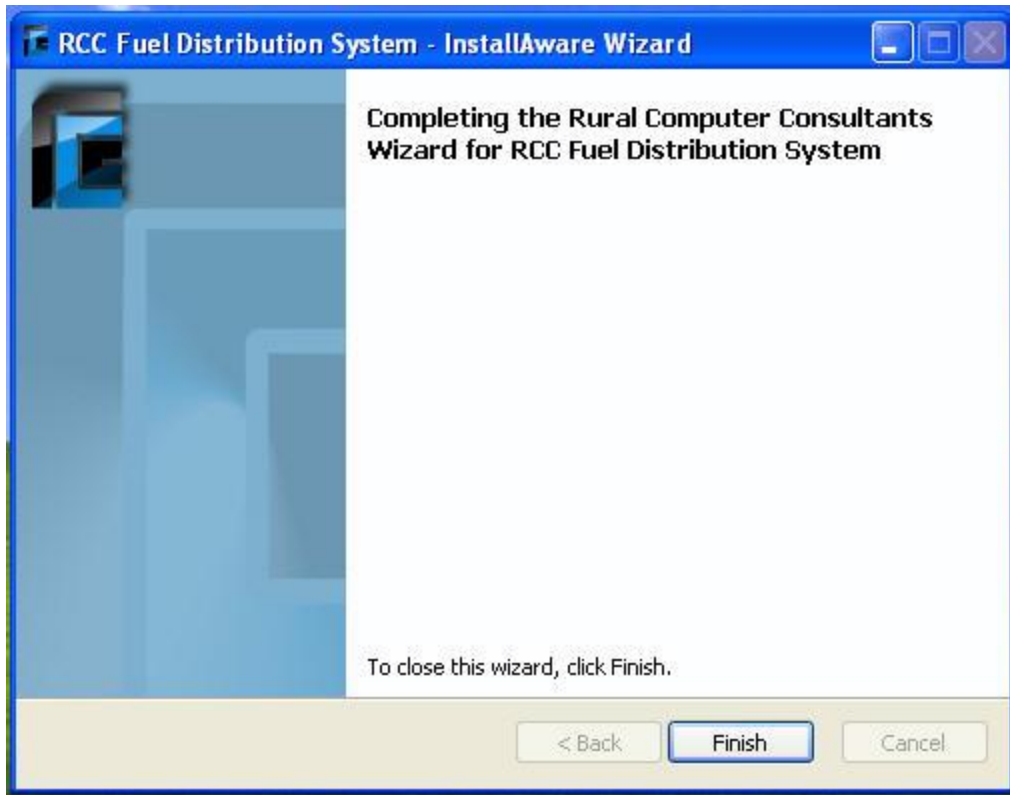


Click 'Next' to proceed.



If this install is on the SERVER and 'Patch enabled' was checked, you will receive a "RCC Updates are available..." dialog.

- It is recommended that you Download and install now (click 'Yes').
 - *When selecting 'Yes', RCC will pull the latest updates.*



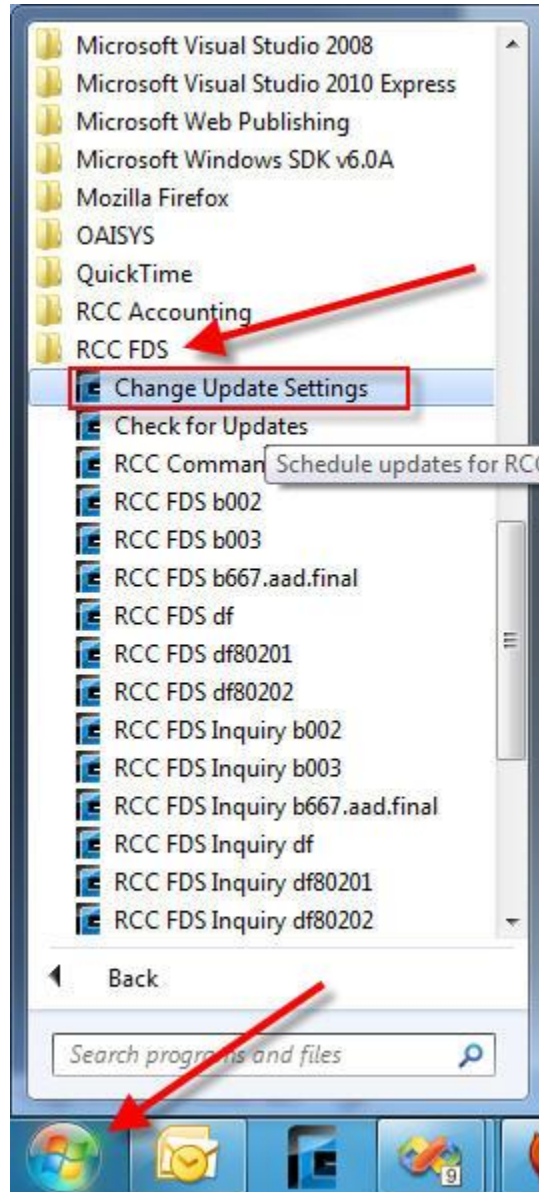
Click Finish.

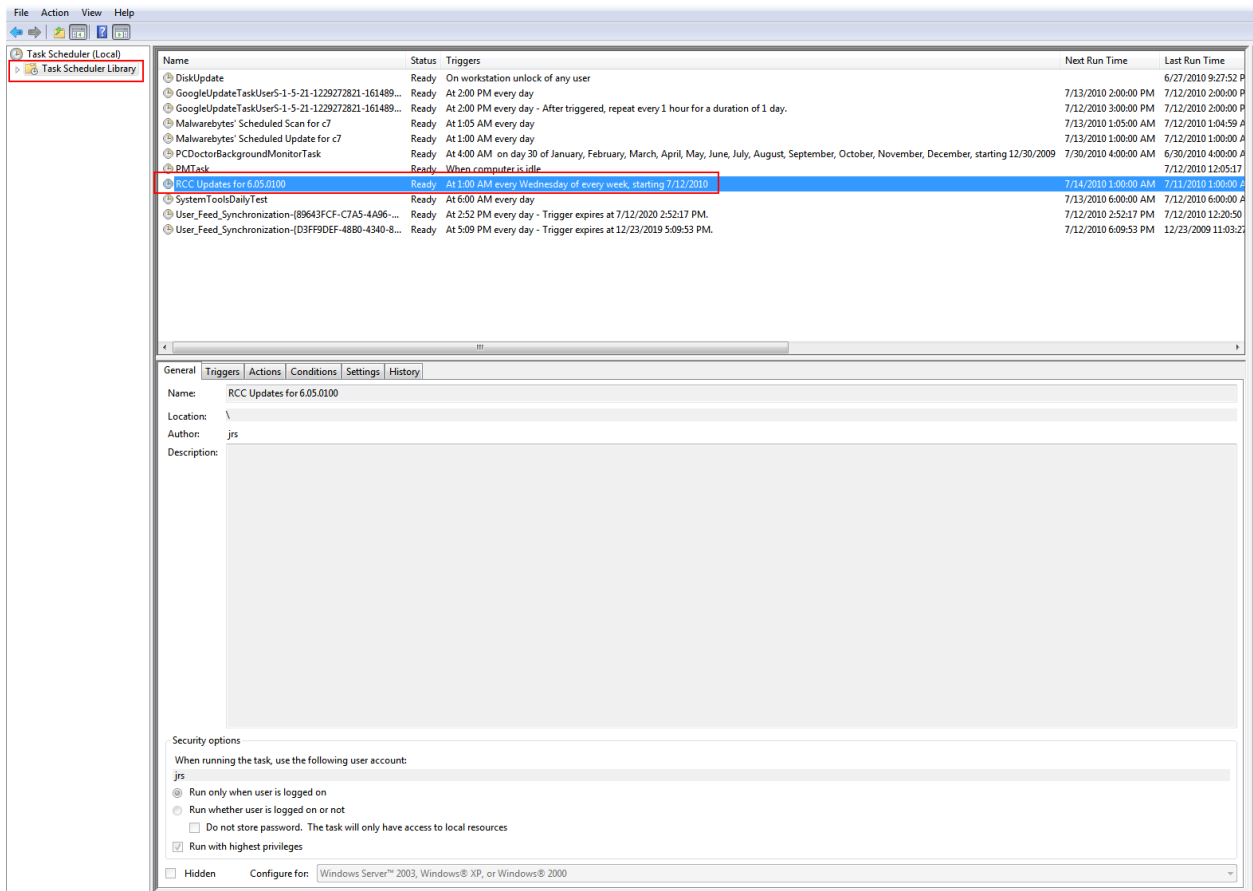
RCC is now installed on your computer.

To Configure Automatic Updates for RCC

Automatic updates have been configured on your computer to run once a week. If you would like to view or change the scheduled time, follow the steps outlined below.

Click on the start menu and navigate to the RCC FDS folder and select “Change Update Settings”

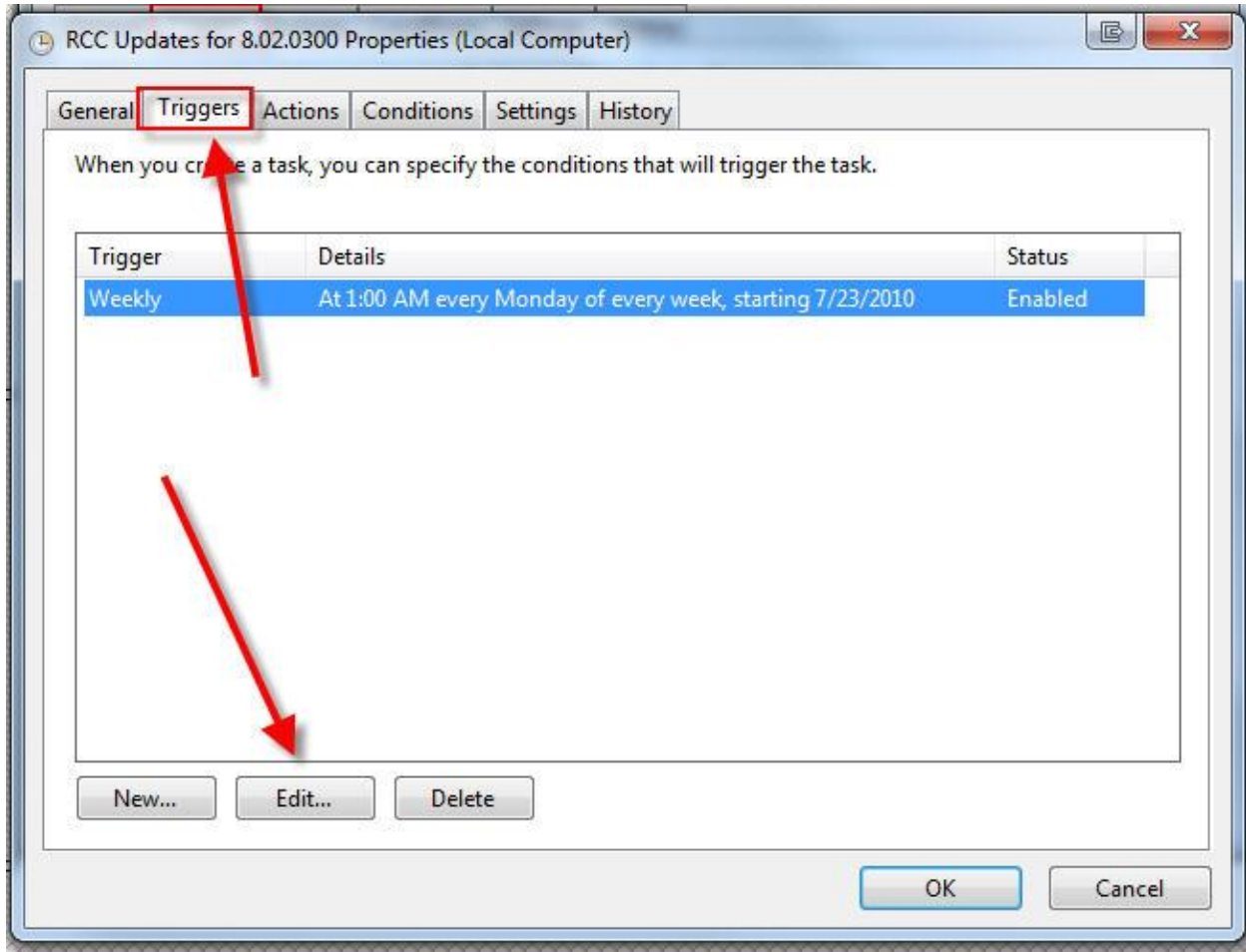




Right click on RCC's scheduled task (RCC Updates for X.XX.XXXX) and select "Properties".

Edit the day and time of Automatic updates:

- Select the “Triggers” Tab
- Select edit and input the Day and Time you would like the task scheduler to check for updates
- Update your settings then click “OK”



- If you want the updater to run when you are not logged in, select “Run whether user is logged in or not” (To change this you may need the administrative password)